

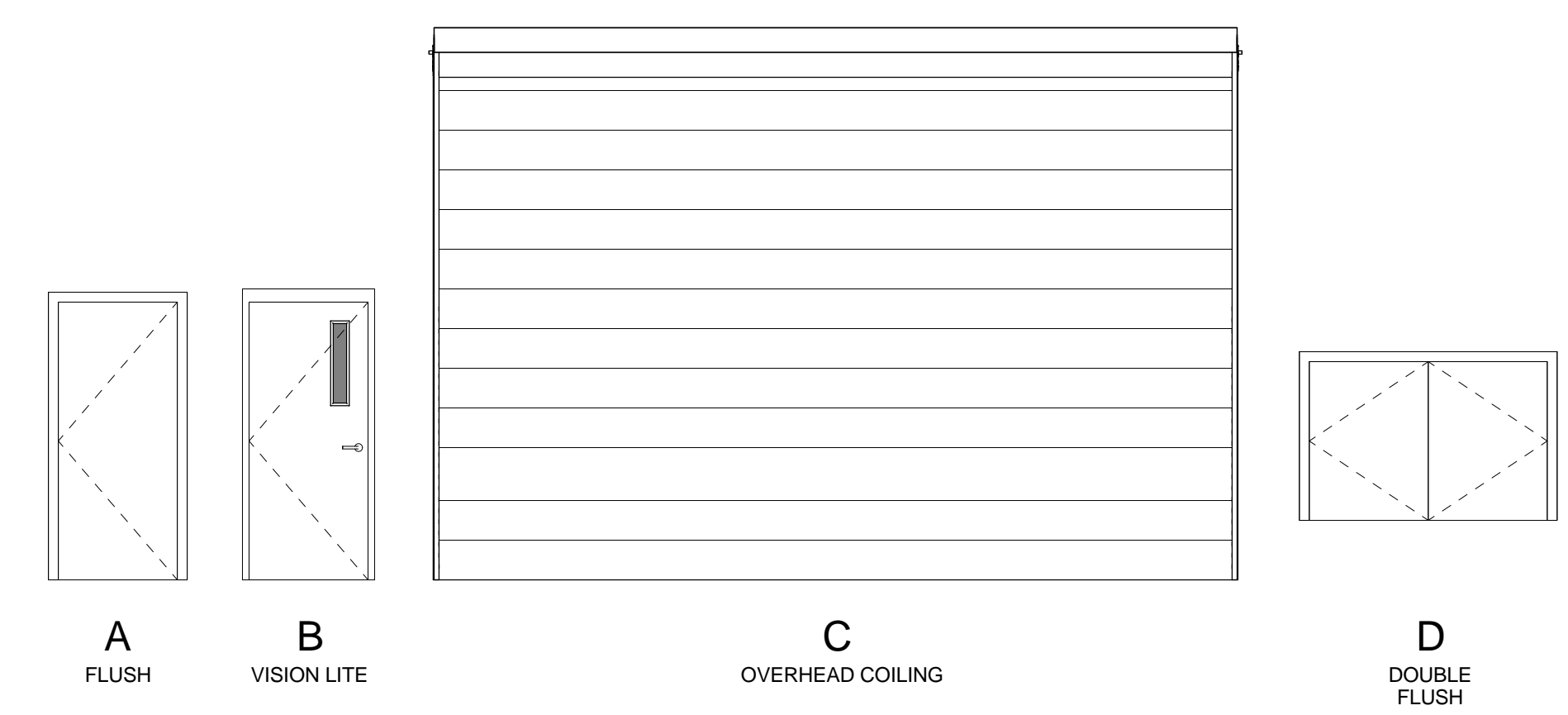
ROOM FINISH SCHEDULE									
Number	Name	Floor Finish	Base Finish	North Material	East Material	South Material	West Material	Ceiling Finish	Comments
FACTORY FLR.									
101	WAREHOUSE FLOOR	EX	-	EX	EX	EX	EX	EX	
102	MODEL SHOP AREA	EX	-	EX	EX	EX	EX	EX	
103	WILLIS MULLET'S OFFICE	EX	EX	EX	EX	EX	EX	EX	
104	ENTRANCE	EX	EX	EX	EX	EX	EX	EX	
105	COMM. RM.	EX	EX	EX	EX	EX	EX	EX	
106	SHARED OFFICE	EX	EX	EX	EX	EX	EX	EX	
107	FDM ROOM	EX	EX	EX	EX	EX	EX	EX	
108	EX. PRIVATE OFFICE 1	EX	EX	EX	EX	EX	EX	EX	
109	EX. PRIVATE OFFICE 2	EX	EX	EX	EX	EX	EX	EX	
110	EX. PRIVATE OFFICE 3	EX	EX	EX	EX	EX	EX	EX	
111	NEW R&D LAB	CONC	RBR	ARGWB	ARGWB	ARGWB	ARGWB	OPEN	ARGWB TO 8'-0" @ EAST AND SOUTH EXTERIOR WALLS
112	FUTURE OFFICE 1	CPT	RBR	GWB	GWB	GWB	GWB	ACT	
113	FUTURE OFFICE 2	CPT	RBR	GWB	GWB	GWB	GWB	ACT	
114	FUTURE OFFICE 3	CPT	RBR	GWB	GWB	GWB	GWB	ACT	
115	FUTURE OFFICE 4	CPT	RBR	GWB	GWB	GWB	GWB	ACT	
116	FUTURE OFFICE 5	CPT	RBR	GWB	GWB	GWB	GWB	ACT	
117	FUTURE OFFICE 6	CPT	RBR	GWB	GWB	GWB	GWB	ACT	
118	FUTURE OFFICE 7	CPT	RBR	GWB	GWB	GWB	GWB	ACT	
119	HVAC CLOSET								

DOOR SCHEDULE									
Mark	Type Mark	Width	Height	Thickness	Door Material	Frame Material	Closer	Lockset	Comments
FACTORY FLR.									
101	B	3'-0"	7'-0"	1 3/4"	HM	HM	Yes	PASSAGE	
111A	B	3'-0"	7'-0"	1 3/4"	HM	HM	Yes	PASSAGE	
111B	C	20'-0"	12'-8"		STEEL	STEEL			
112	A	3'-0"	7'-0"	1 3/4"	WD	HM		OFFICE	
113	A	3'-0"	7'-0"	1 3/4"	WD	HM		OFFICE	
114	A	3'-0"	7'-0"	1 3/4"	WD	HM		OFFICE	
115	A	3'-0"	7'-0"	1 3/4"	WD	HM		OFFICE	
116	A	3'-0"	7'-0"	1 3/4"	WD	HM		OFFICE	
117	A	3'-0"	7'-0"	1 3/4"	WD	HM		OFFICE	
118	A	3'-0"	7'-0"	1 3/4"	WD	HM		OFFICE	
119	D	6'-0"	4'-0"	1 3/4"	HM	HM	Yes	STORAGE	

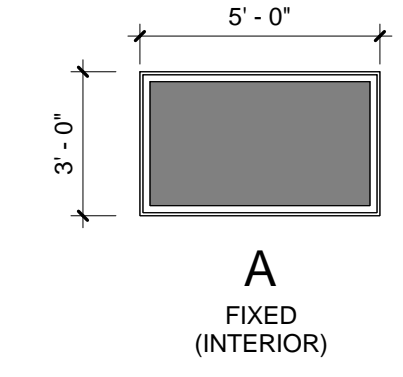
WINDOW SCHEDULE				
Type Mark	Width	Height	Head Height	Comments
A	5'-0"	3'-0"	7'-0"	

ROOM FINISH KEY	
ARGWB	ABUSE-RESISTANT GYPSUM WALL BOARD
CONC	CONCRETE
CPT	CARPET
EX	EXISTING
GWB	GYPSUM WALL BOARD
MARGWB	MOISTURE-RESISTANT GYPSUM WALL BOARD
TILE	TILE SET CERAMIC TILE
WD	WOOD

DOOR TYPES



WINDOW TYPES

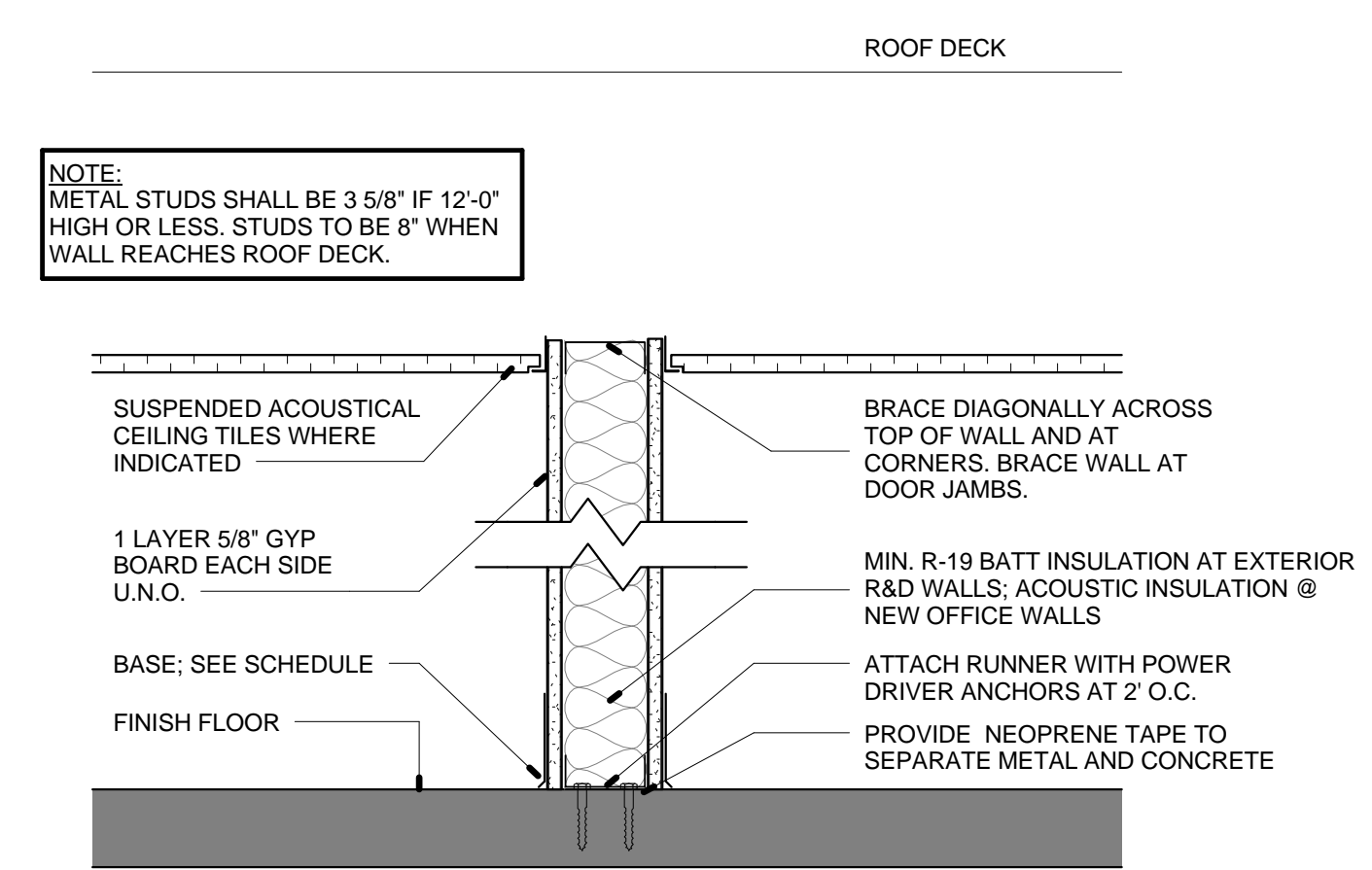


WINDOW NOTES

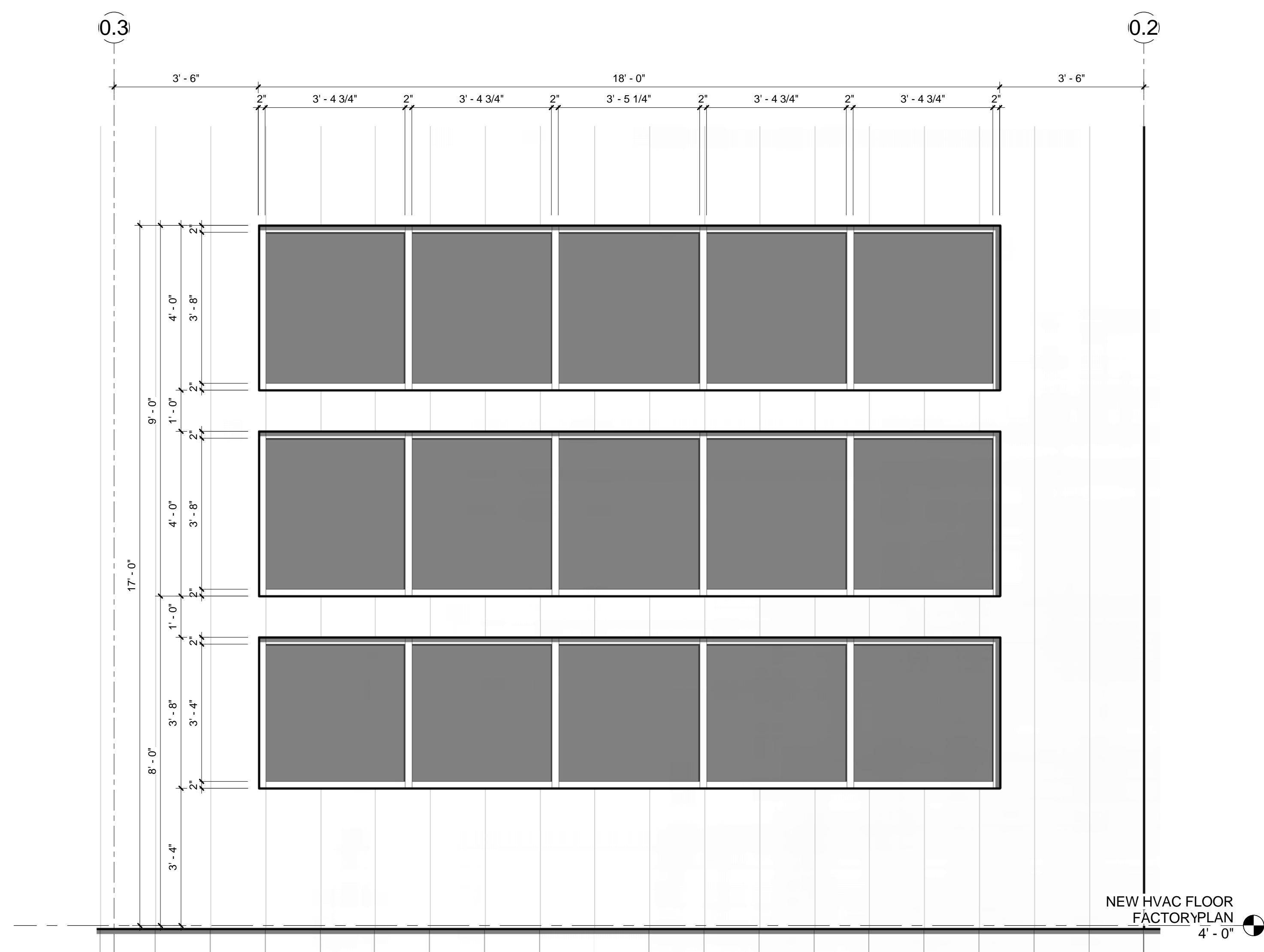
1. ALL WINDOW GLAZING TO BE TEMPERED SAFETY GLAZING.

DOOR NOTES

1. CONTRACTOR TO VERIFY ALL DOOR STYLES, DOOR AND FRAME MATERIALS, AND HARDWARE WITH OWNER.
2. ALL GLAZING IN DOOR TO BE TEMPERED SAFETY GLAZING.
3. PROVIDE LEVER STYLE HARDWARE, TYP.
4. WOOD DOORS TO BE SOLID CORE, PAINTED.
5. PROVIDE DOOR STOPS, BUMPERS, THRESHOLDS AND WEATHERSTRIPS FOR ALL DOORS AS REQUIRED.
6. ALL DOORS TO RECEIVE (3) HINGES EXCEPT TYPE "C".
7. FACE WELD INTERIOR HOLLOW METAL FRAMES.



2 TYPICAL INTERIOR PARTITION DETAIL
1 1/2" = 1'-0"



STOREFRONT NOTES:

1. CONTRACTOR TO FIELD VERIFY OPENING MEASUREMENTS PRIOR TO ORDERING.
2. ALUMINUM STOREFRONT SYSTEM AND GLAZING MUST PASS BASIC PROTECTION REQUIREMENTS IN ASTM E1996 FOR WIND ZONE 3.
3. STOREFRONT SYSTEM SHALL INCLUDE THERMAL BREAK.
4. MULLION FINISH TO BE HIGH-PERFORMANCE ORGANIC, TWO COAT FLUOROPOLYMER SYSTEM, COLOR AS SELECTED BY ARCHITECT FROM MANUFACTURER'S FULL RANGE.
5. ACCEPTABLE MANUFACTURERS: KAWNEER, CORAL INDUSTRIES, OLDCASTLE, OR ARCHITECT-APPROVED EQUAL.
6. PROVIDE LOW-E COATED, ARGON-FILLED GLAZING W/ A SOLAR HEAT GAIN COEFFICIENT OF 0.40 MAXIMUM AND A MINIMUM VISIBLE LIGHT TRANSMITTANCE OF 60%.

1 TYP. STOREFRONT ELEVATION
1/2" = 1'-0"